

Class -> 8th

Subject-> Computer



Questions & Answers of Chapter 8th

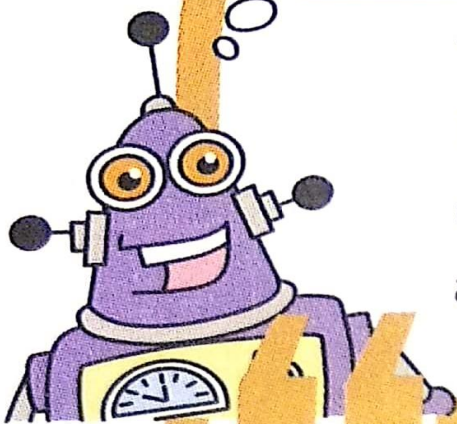


Exploring More Features of Adobe Photoshop



Did You Know?

You can decrease and increase the size of the brush or eraser tool using the  and  keys on the keyboard.



Learning Objectives

To learn about:

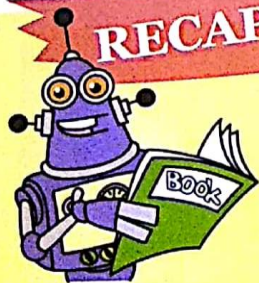
- ❖ retouching tools in Photoshop.
- ❖ type tools in Photoshop.
- ❖ layers in Photoshop.
- ❖ filters in Photoshop.

Words to Know



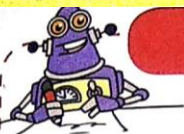
- **Blur Tool:** A tool in Photoshop that softens the selected portions of an image giving it a blurred effect.
- **Burn Tool:** A tool in Photoshop used for darkening the areas of an image.
- **Clone Stamp Tool:** A tool in Photoshop that allows duplicating part of an image by setting a sampling point in the image to be cloned.
- **Dodge Tool:** A tool in Photoshop used for lightening the areas of an image.
- **Eraser Tool:** A tool in Photoshop that erases pixels in an image to transparency or to the background colour as you drag it across the image.
- **Healing Brush Tool:** A tool in Photoshop that allows repairing of imperfections such as scratches, blemishes and marks in an image.
- **Pattern Stamp Tool:** A tool in Photoshop that allows filling an area with a selected pattern.
- **Sharpen Tool:** A tool in Photoshop that lets you improve the clarity of an image by sharpening the edges of selected portions of an image.
- **Smudge Tool:** A tool in Photoshop that gives an effect of spreading the paint across the image as if you have dragged your finger through wet paint.
- **Spot Healing Brush Tool:** A tool in Photoshop that allows repairing of imperfections such as blemishes and other marks in your photos quickly.
- **Type Tools:** A tool in Photoshop used for inserting text.

RECAP ZONE



- Retouching tools let you repair damaged images, apply repeated patterns or enhance the look an image by using various effects.
- Some of the retouching tools are Healing Brush Tool, Spot Healing Brush Tool, Patch Tool, Red Eye Tool, Blur Tool, Sharpen Tool, Smudge Tool, Dodge Tool, Sponge Tool, Burn Tool, Clone Stamp Tool and Pattern Stamp Tool.
- Text can be added to images using the Text Tools.
- Layers can be thought of as transparent sheets mounted on top of each other that let you work on an individual part of an image without affecting the other parts.
- Filters let you change the appearance of an image by adding special effects to it.

Practice Zone

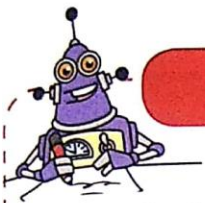


Which Photoshop tool will you use to

1. duplicate a part of an image by setting the sampling point in the image? _____
2. quickly remove blemishes and other marks in photos without setting the sampling point? _____
3. remove all areas that share similar pixels in an image? _____
4. darken certain areas of an image? _____
5. give an effect of spreading paint across the image? _____
6. moderate or soften the focus of some areas of an image? _____

Answers of Practice Zone:

- (1)-Clone Stamp Tool
- (2)-Spot Healing Brush Tool
- (3)-Magic Eraser Tool
- (4)-Burn Tool
- (5)-Smudge Tool
- (6)-Blur Tool



Practice Zone

State whether the following statements are True or False.

- 1. Layers let you work on an individual part of an image without affecting others.
- 2. You cannot change the stacking order of layers.
- 3. When you insert text in Photoshop, it is created on a separate layer called the Type Layer.
- 4. Elements placed on higher layers are displayed below the elements placed on lower layers.
- 5. You cannot apply effects on layers.
- 6. An image can have only one background.


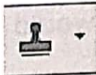

Answers of Practice Zone:

- (1)- True
- (2)- False
- (3)- True
- (4)- False
- (5)- False
- (6)- True

ASSESSMENT ZONE



A. Choose the correct answer.

1. Which of the following tools lets you erase all areas that share similar coloured pixels?
 - a) Magic Eraser Tool
 - b) Background Eraser Tool
 - c) Type Tool
 - d) Clone Stamp Tool
2. Which of the following tools can be used to repair imperfections such as scratches, blemishes and marks in an image?
 - a) Blur Tool
 - b) Burn Tool
 - c) Sharpen Tool
 - d) Healing Brush Tool
3. Which of the statement holds true for filters?
 - a) Filters let you change the appearance of an image by adding special effects to it.
 - b) You can apply a filter to an entire layer, or a selected portion of a layer.
 - c) You can apply multiple filters to an image using the Filter Gallery.
 - d) All of the above
4. What is the use of Type Tool?
 - a) It is used for inserting text in Photoshop.
 - b) It is used for filling an area with a selected pattern in Photoshop.
 - c) It is used to lighten areas of an image in Photoshop.
 - d) It is used for erasing the background colour of an image in Photoshop.
5. Which of the following tools will you use to create an effect of spreading the paint across the image as if you have dragged your finger though wet paint?
 - a) 
 - b) 
 - c) 
 - d) None of these

B. Fill in the blanks using the words given in the box.

Blur Filter Gallery Clone Stamp Background Background Eraser Layers

1. The _____ tool allows you to erase the background colour from an image or a layer.
2. _____ lets you work on individual parts of an image without affecting others.
3. The _____ tool lets you duplicate part of an image by setting a sampling point in the image.
4. You can use the _____ to apply multiple filters on the image or individual filters more than once on an image.
5. To reduce focus on selected portions of an image, you use the _____ tool.
6. The layer at the bottom of the Layer panel is called _____.

Answers of Assessment Zone:

A. Choose the correct answer(Answers)

(1)- (a) Magic Eraser Tool

(2)- (d) Healing Brush Tool

(3)- (d) All of the above

(4)- (a) It is used for inserting text in Photoshop.

(5)- (c)  (Smudge tool)

B. Fill in the blanks(Answers)

(1)-Background Eraser

(2)-Layers

(3)-Clone Stamp

(4)-Filter Gallery

(5)- Blur

(6)-Background

C. Answer the following questions.

1. How is Healing Brush Tool different from the Spot Healing Brush Tool?
2. What is the purpose of the Clone Stamp Tool?
3. Name the three variants of the Eraser Tool.
4. What is the use of layers in Photoshop?
5. What is the use of filters?
6. How is the Dodge Tool different from the Burn Tool?
7. What do you understand by warping text in Photoshop?
8. How will you add effects to the contents of a layer?

D. Answer the following questions(Answers)

(1) Ans. ->

The Healing Brush Tool allows you to repair imperfections such as scratches, blemishes and marks in an image. While working with this tool, you pick up sample pixels (pixels to be used for repairing) from the adjoining portion of an image. The Healing Brush Tool matches the texture, lighting, transparency and shading of the sampled pixels and applies them to the pixels that are being repaired.

The Spot Healing Brush Tool works in a similar manner to the Healing Brush Tool except that it does not require the sampling point to be set. It automatically picks up the sampled pixels from around the area to be retouched. This tool can be used to quickly remove spots, blemishes and other marks from photographs.

(2) Ans. - > The Clone Stamp Tool lets you duplicate the parts of an image by setting a sampling point in the image to be cloned. The cloned image can be drawn over another image or part of the same image.

(3) Ans. - >

The three variants of the Eraser tool are: Eraser Tool, Background Eraser Tool and Magic Eraser Tool.

(4) Ans. - >

Layers can be thought of as transparent sheets mounted on the top of each other that let us work on an individual part or an element of an image without affecting the other parts or elements.

(5) Ans. - >

Filters let you change the appearance of an image by adding special effects to it. For example, you can use the Stylize filters to give a painted effect to your images, the Render filters to create 3D shapes, reflections in an image and so on.

(6) Ans. - > The Dodge Tool is used to lighten the areas of an image whereas the Burn Tool is used to darken the areas of an image.

(7) Ans. - >

Warping Text is used to warp the shape of the text in a number of interesting ways such as that of a wave, a flag or an arc.

(8) Ans. - >

Photoshop offers various layer effects that allows you to enhance the look of the contents of a layer. Some of these effects include shadow, glow, bevel, emboss and overlay.

The steps to apply the layer effects are:

Step 1: Select a layer in the Layers panel.

Step 2: Choose Layer → Layer Style.

Step 3: The Layer Style dialog box appears. Choose the desired effect by clicking the corresponding check boxes.

Step 4: Set appropriate options for the selected effect on the right side of the dialog box.

Step 5: Click OK to apply the effect.